

Phantom Dual 315W CMH System

The Phantom Dual CMh System is a highly versatile system that allows you to run a single 315W lamp or both at the same time for 630W of high-PAR CMh light. The dual reflectors can be used in the standard position or rotated 90 degrees downward to give a low-profile hanging configuration that is ideal for tight spaces.

3100K **4200K**
120-240V PHMH601013 PHMH601014



Phantom Dual 315W CMH System

Lamp	Premium 315W Ceramic Metal Halide
Lamp Output	1196 µmol/s
Lamp Lifetime	20,000 hours
Reflector	Enclosed SE CMH (replaceable)
Reflector Material	EU Aluminum 99.85% pure, 95% reflectivity
Ballast	Phantom Dual 315W CMH
Ballast Housing Material	Aluminum
Armature Material	Aluminum
Socket	PGZX18
Fixture Weight	15.2 lbs

Phantom Dual 315W CMH Input Amperage Reference

Main Voltage	120V	208V	240V
I _{max}	6.6A	3.8A	3.3A
105%	6.2A	3.6A	3.1A
100%	5.8A	3.3A	2.9A
85%	5.0A	2.9A	2.5A
60%	3.4A	2.0A	1.7A

Phantom Dual 315W CMH Ballast Electrical Specifications

Lamp Power	315W (x2)
Main Voltage	120/208/240V
Operating Voltage Range	110-265V
Max Input Power	764W
Output Power Settings	60-85-100-105%
Power Factor	> 0.97
Frequency	50/60Hz
Igniter Voltage	3-5 kV
THD	< 8%
CF	1.414-1.6
t _a	40°C/104°F
t _c	80°C/176°F

Phantom Dual 315W CMH Ballast Features

Microprocessor Control	Yes
LED Status Indicator	Yes
Open Circuit Protection	Yes
Open Circuit Indicator	Yes
Short Circuit Protection	Yes
Short Circuit Indicator	Yes
Overtemperature Protection	Yes
Overtemperature Indicator	Yes
End-of-Lamp-Life Sensor	Yes
End-of-Lamp-Life Indicator	Yes
Over/Undervoltage Protection	Yes
Over/Undervoltage Indicator	Yes
Patented Ignition Control	Yes
USB Port to Integrate with Climate Controls	Yes
Auto-restrike Protection	Yes
Internal EMI Suppression	Yes
8' 120V 16/3 IEC Power Cord	Yes

Phantom Dual 315W CMH Safety Certifications

ETL	Yes
FCC Commercial	Yes
FCC Residential	Yes

Phantom Dual 315W CMH Operation Notes

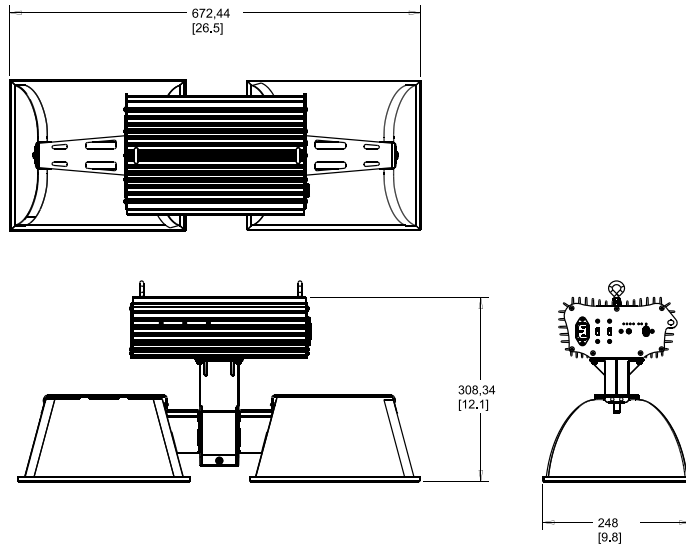
For use with a generator, line conditioning equipment to control input voltage must be used in order to avoid damage to the ballasts. Contact us for more information.

** Compatible with Autopilot PX Series Digital lighting Controllers running version 1.63 software or later only (sold separately).*

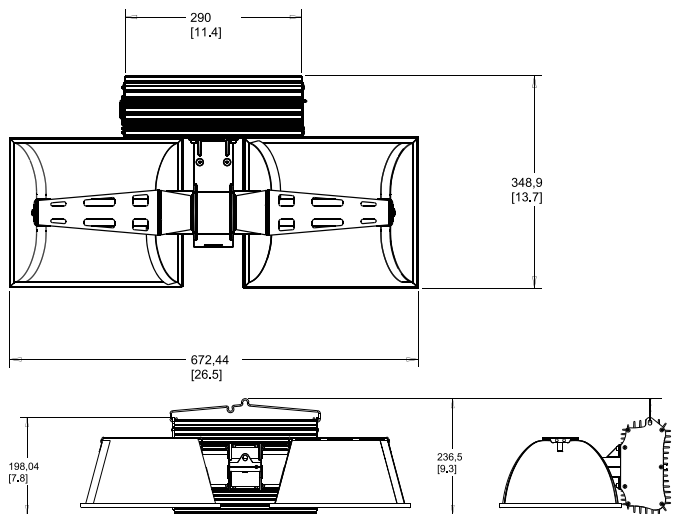


Phantom Dual 315W CMH System

Traditional Ballast Orientation Dimensions



Low Profile Ballast Orientation Dimensions



Each ballast **MUST** be wired to the main's neutral line back to the circuit.
DO NOT "daisy-chain" a neutral line with any other ballast.

⚠ WARNING: FAILURE TO FOLLOW GUIDELINES COULD RESULT IN ELECTRICAL SHOCK.

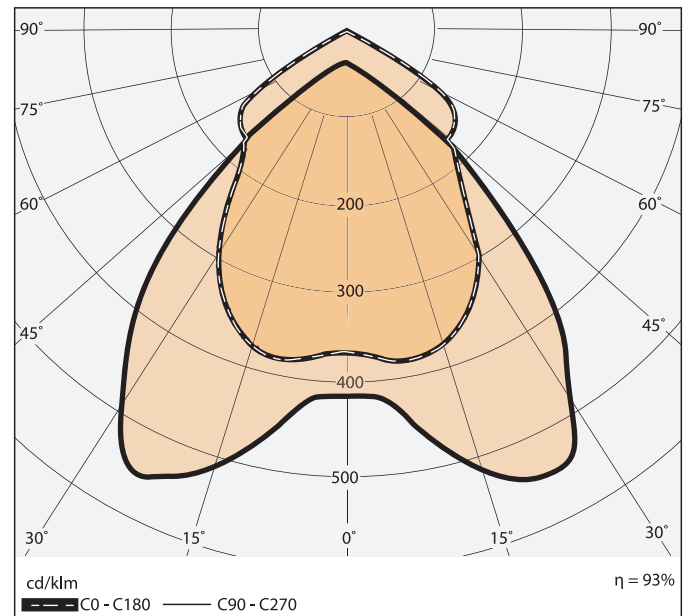
Do not touch, move, spray, or clean your light fixture when it is plugged in. Allow it to cool down before handling. Recommended mounting clearance for your fixture is 8"-12" on all sides. Do not mount directly to any combustible surface. Make sure to disconnect the power when changing the lamp. This tech sheet is not in any way a replacement for a technical installation manual. Consult technical installation manual prior to installation.



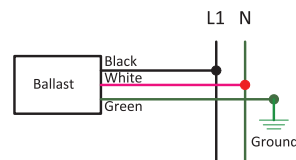
WARNING – POSSIBLE RISK OF INJURY TO EYES AND SKIN

Hazardous UV, HEV, and IR radiation may be emitted from light source. Always wear personal protective equipment ensuring complete shielding of skin and eyes. Avoid prolonged exposure and looking directly at light source.

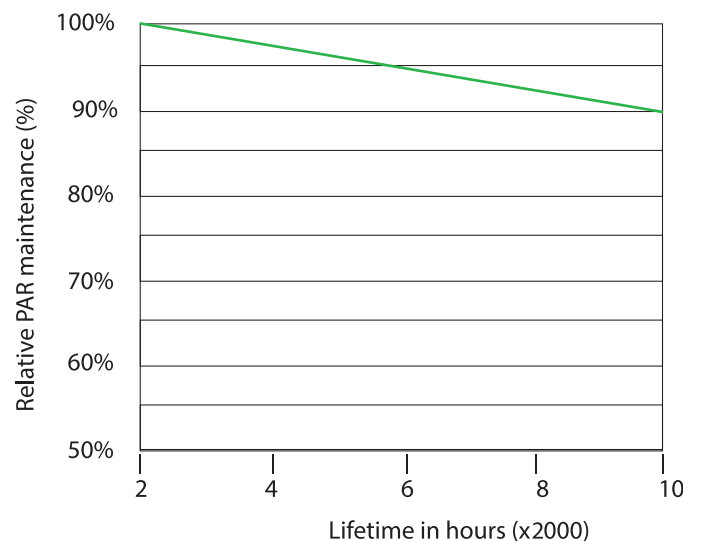
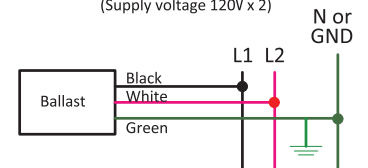
Polar Diagram



120/208V (Supply voltage 120V/208V)



240V (Supply voltage 120V x 2)



All rights reserved.
Specifications are subject to change without notice.
Trademarks are the property of Hydrofarm.

